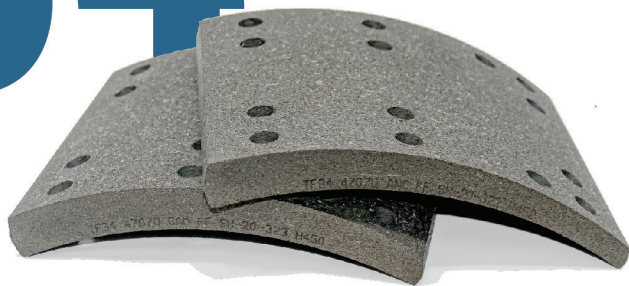


TF34



I N V E N T O R Y
 Q U A L I T Y
 S A V I N G S

FORMULATION: Formulated for maximum performance in its standard 23K lining class, featuring superior, high-end raw materials for its price point.

APPLICATION: For use on S-Cam brakes on trucks, tractors and trailers in medium weight uses such as general cargo, furniture, plastics, and mail.

CASH FLOW ADVANTAGE: TF34 linings are available in quantities smaller than a trailer load, ship within 2 days across the continental U.S. and free working capital and storage space to help you improve overall operations and profitability.

TF34 brake linings meet or exceed FMVSS 121 and comply with RSD guidelines and SAE J22975 & J866 requirements.

BLOCK INTEGRITY

Gogan Hardness
25 GC

Nondestructive measure of compressibility, checking consistency of lining's formulation and processing (SAE J379a).

Specific Gravity
2.05

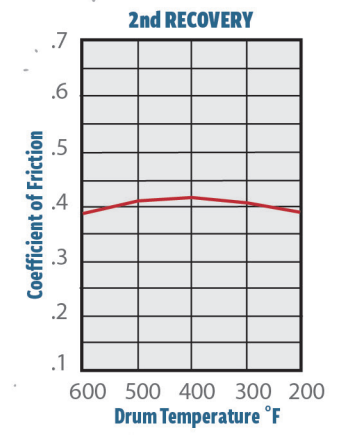
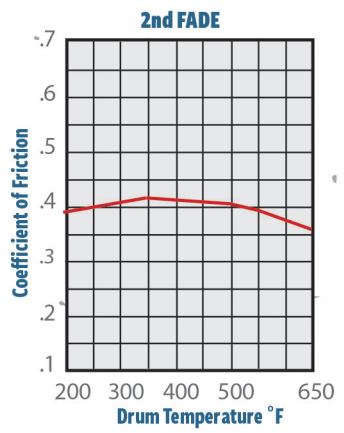
Nondestructive quality control test of the consistency of formulation and processing of brake lining (SAE J380).

Tensile Strength
1450 PSI

Method of evaluating physical strength of brake lining (ASTM D952); force required to break a sample 1.0 x 1.0 inch.

Temp Range
700°F

PROCEDURE

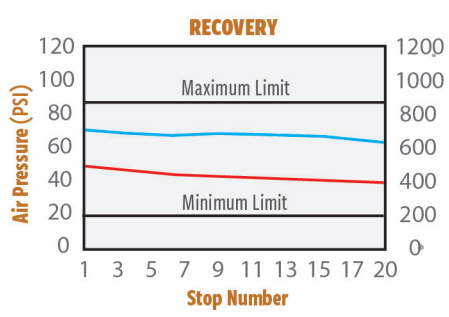
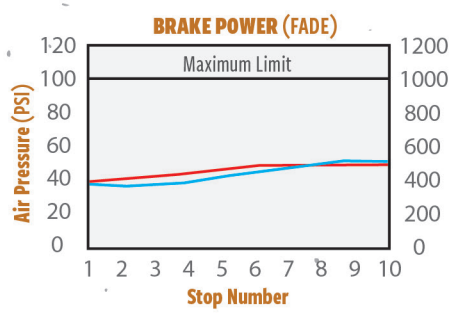
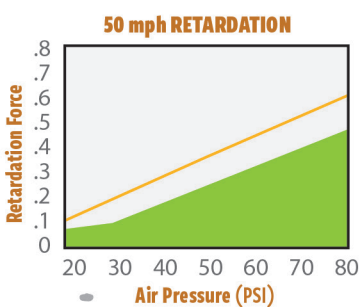


Normal Friction: .420°F
Hot Friction: .410°F

TYPICAL INERTIA DYNAMOMETER PLOT TEST (FMVSS 121 STANDARD)

Brake: 16.5" x 7" Meritor S-Cam
AL Factor: 165
Axle Load: 23,000 lbs.
Rolling Radius: 20.7"
Drum Weight: 120 lbs.

■ Retardation Force ■ Temp (°F)
■ Min. Req. Retardation ■ Pressure



©2021 Trilogy Friction LLC