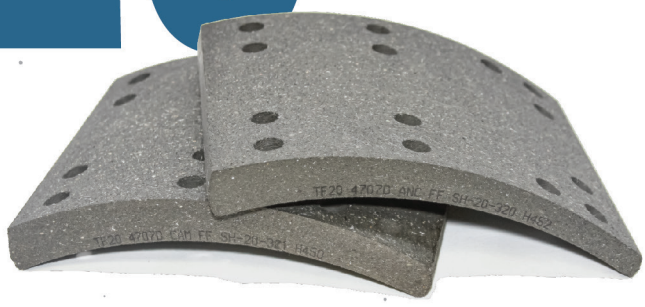


# TF20



I N V E N T O R Y  
Q U A L I T Y  
S A V I N G S

**FORMULATION:** Formulated for maximum performance in its standard 20K lining class, featuring unexpected high-quality raw materials for its value.

**APPLICATION:** For use on S-Cam brakes on trucks, tractors and trailers in medium weight uses such as general cargo, furniture, plastics, and mail.

**CASH FLOW ADVANTAGE:** TF20 linings are available in quantities smaller than a trailer load, ship within 2 days across the continental U.S. and free working capital and storage space to help you improve overall operations and profitability.

*TF20 brake linings meet or exceed FMVSS 121 and comply with RSD guidelines and SAE J22975 & J866 requirements.*

## BLOCK INTEGRITY

**Gogan Hardness**  
25 GC

Nondestructive measure of compressibility, checking consistency of lining's formulation and processing (SAE J379a).

**Specific Gravity**  
2.05

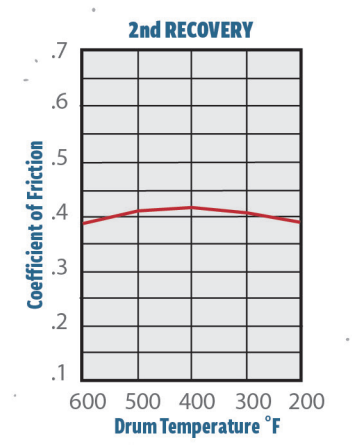
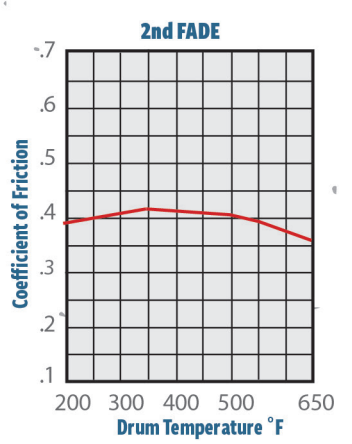
Nondestructive quality control test of the consistency of formulation and processing of brake lining (SAE J380).

**Tensile Strength**  
1450 PSI

Method of evaluating physical strength of brake lining (ASTM D952); force required to break a sample 1.0 x 1.0 inch.

**Temp Range**  
700°F

## PROCEDURE

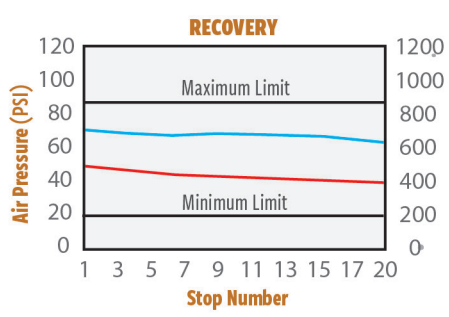
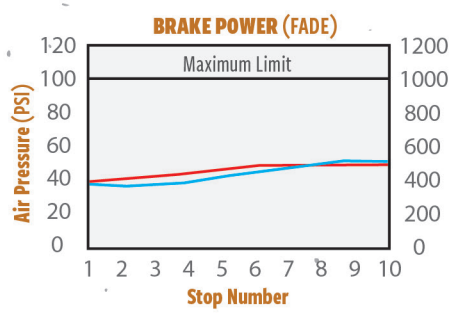
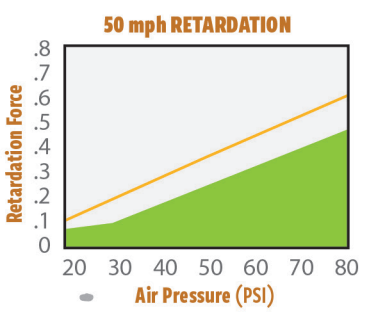


Normal Friction: .420°F  
Hot Friction: .410°F

## TYPICAL INERTIA DYNAMOMETER PLOT TEST (FMVSS 121 STANDARD)

**Brake:** 16.5" x 7" Meritor S-Cam  
**AL Factor:** 165  
**Axle Load:** 20,000 lbs.  
**Rolling Radius:** 20.7"  
**Drum Weight:** 120 lbs.

■ Retardation Force    ■ Temp (°F)  
■ Min. Req. Retardation    ■ Pressure



©2021 Trilogy Friction LLC